

Emergency Communications



Community Emergency
Response Team



Introduction to Radio Communications

James Knighton (WJ2K)

President, Amateur Radio Euleless



FEMA

CERT
Emergency Communications



1



Introduction

- Effective communications is the greatest logistical problem during an emergency event
- CERT volunteers can be part of the solution



Overview

- Role of CERT emergency communications during an activation
- Communications plans
- Communication modes
- Basic radio anatomy
- Communications operations
- Practical exercises

Role of CERT Emergency Communications

- Intra-team communications
 - Allows volunteers to quickly and effectively communicate with each other
 - Essential for functions such as light search and rescue and when dealing with large crowds



FEMA

CERT
Emergency Communications



4



Role of CERT Emergency Communications

- Communicating up to the next level
 - Tiers of communication
 - CERT volunteers are “eyes and ears”



Role of CERT Emergency Communications

- Effective communications promotes safety
 - Calling for help when needed
 - Reporting safety-related incidents or concerns
 - Accountability – Team leader keeping track of team members



FEMA

CERT
Emergency Communications



6



Communications Plan

- What is a communications plan?
 - Logistical emergency plan
 - Who communicates to whom
 - How information flows
 - Communications is a part of all ICS Sections



FEMA

CERT
Emergency Communications



7



Communications Plan

- CERT Communications Plan
 - How the CERTs are activated and volunteers are contacted
 - How CERT members communicate with each other
 - How CERT communicates with other emergency responders



FEMA

CERT
Emergency Communications



8



Communications Plan

● ICS 205

INCIDENT RADIO COMMUNICATIONS PLAN (ICS 205)

1. Incident Name: EULESS CERT TEAM				2. Date/Time Prepared: Date: Time:				3. Operational Period Date From: Date To: Time From: Time To:			
4. Basic Radio Channel Use:											
Zone GRP	Ch #	Function	Channel Name/Trunked Radio System Talkgroup	Assignment	RX Freq N or W	RX Tone/NAC	TX Freq N or W	TX Tone/NAC	Mode (A, D, or M)	Remarks	
	8	CERT Command	CERT OPS		467.5625	136.5			A	Cert Operations Inter-Team Communications	
	9	Team Comms	RED Team		467.5875	136.5			A		
	10	Team Comms	GREEN Team		467.6125	136.5			A		
	11	Team Comms	WHITE Team		467.6375	136.5			A		
	12	Team Comms	ORANGE Team		467.6625	136.5			A		
	13	Team Comms	BLUE Team		467.6875	136.5			A		
	14	Team Comms	BROWN Team		467.7125	136.5			A		
5. Special Instructions:											
6. Prepared by (Communications Unit Leader):					Name:			Signature:			
ICS 205			IAP Page		Date/Time:						



FEMA

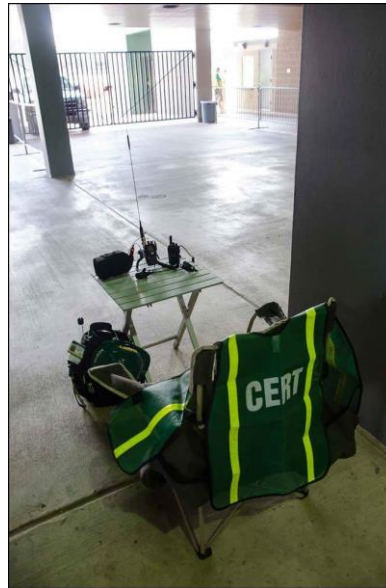
CERT
Emergency Communications




9



CERT Team with Radios

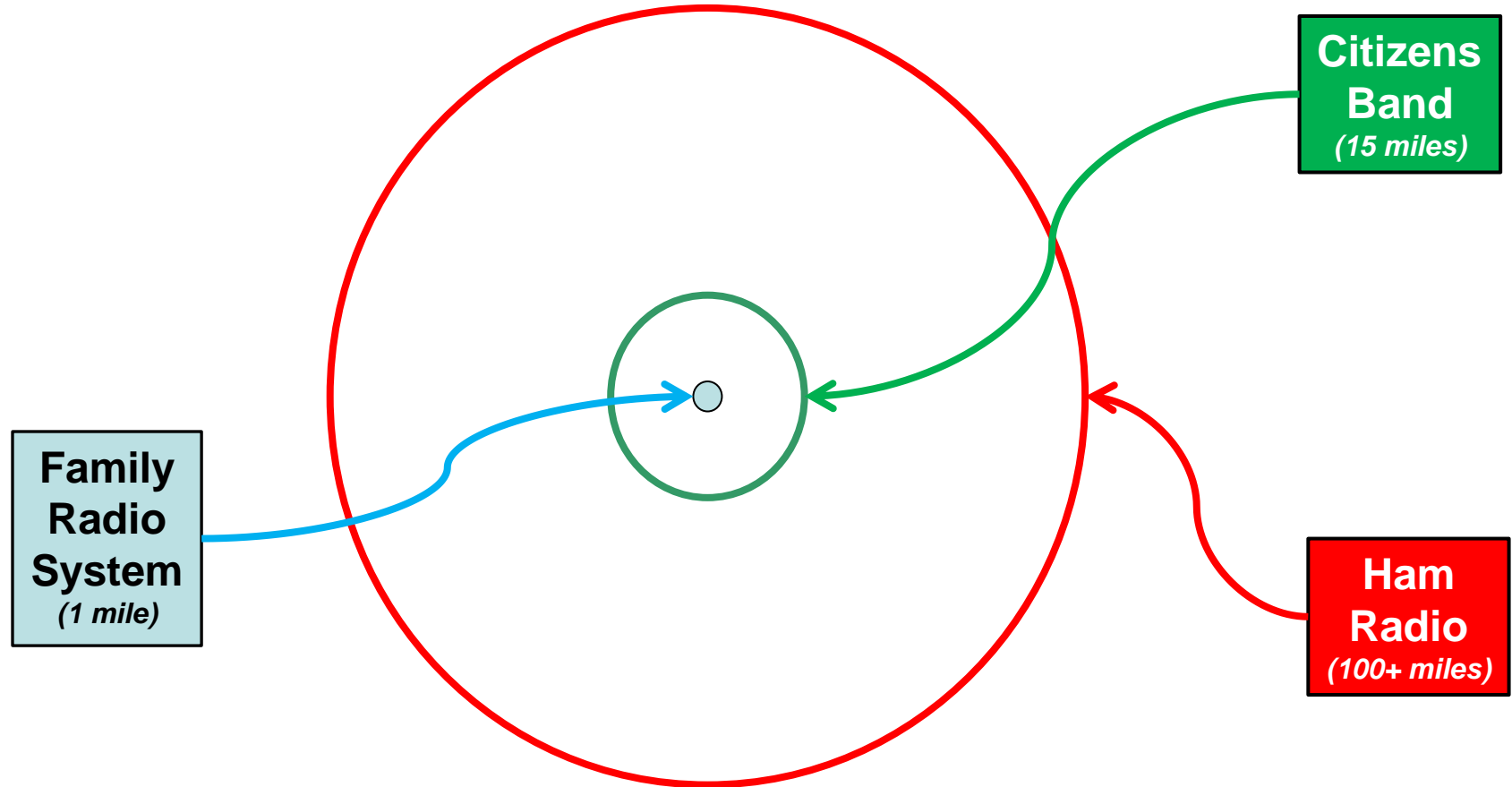


Communication Modes

	License	Personal	Business	Range
<u>F</u>amily <u>R</u>adio <u>S</u>ervice	N	Y	N	1-2 mi Average
<u>G</u>eneral <u>M</u>obile <u>R</u>adio <u>S</u>ervice	(5 Yrs)	Y	Y	Varies
<u>C</u>itizens <u>B</u>and Radio 	N	Y	Y	155.3 mi MAX
Amateur Radio	(10 Yrs)	Y	N	Unlimited

Euless CERT will use: FRS and Amateur Radios

Transmit Distance Compared



FEMA

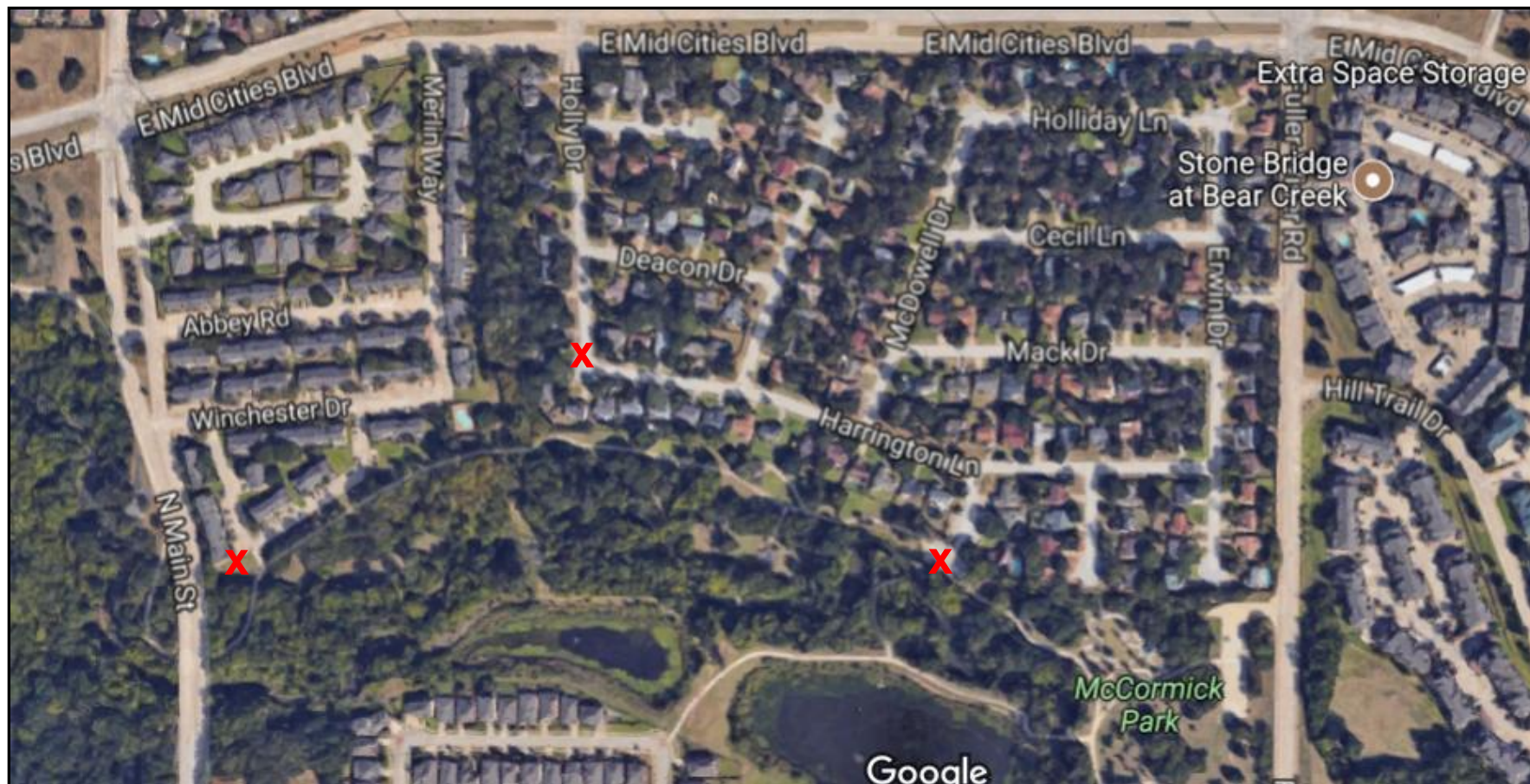
Eules CERT
Radio Communication



12



Transmit Distance Compared



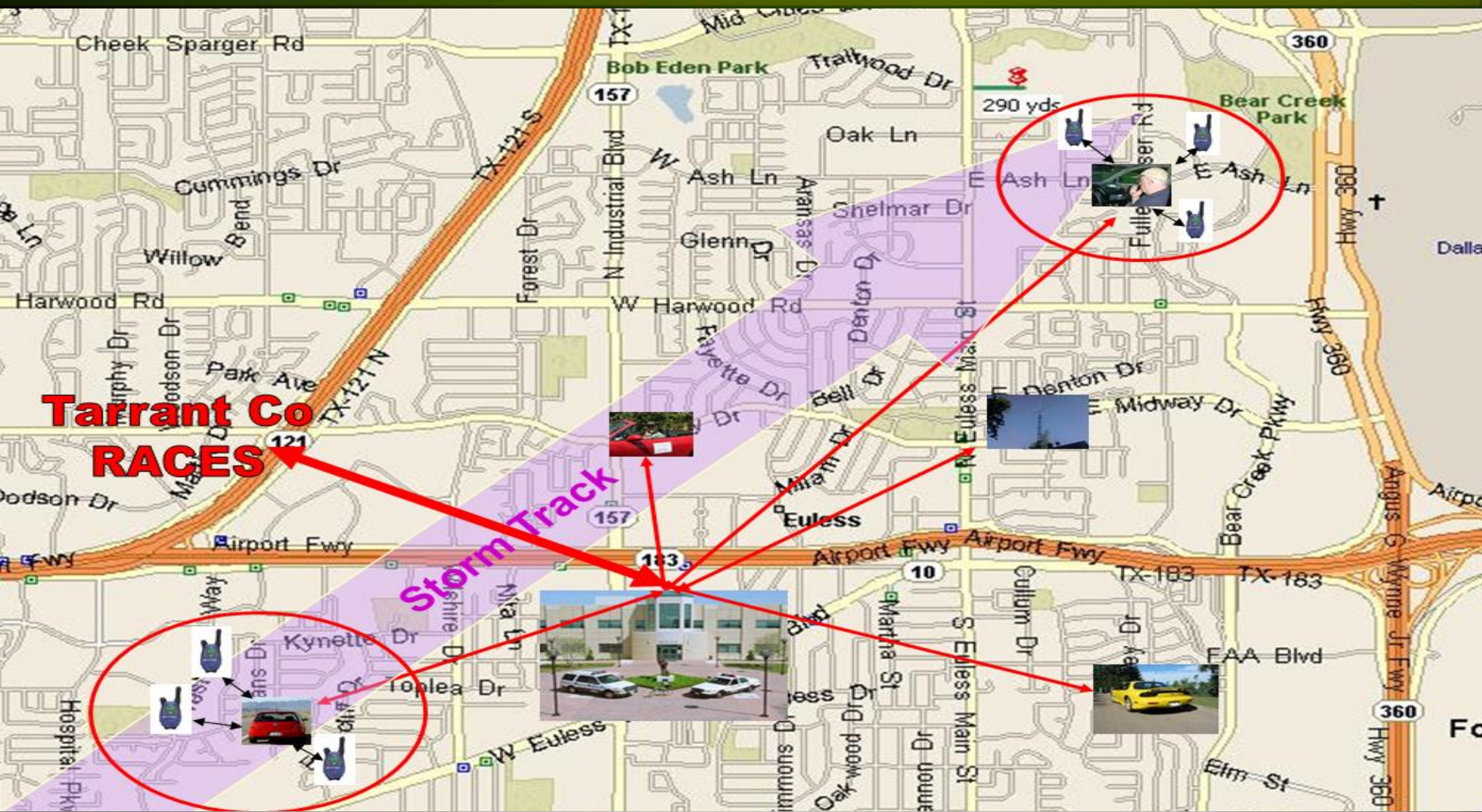
FEMA

CERT
Emergency Communications

13



How Euless CERT will use Radios



FEMA

Euless CERT
Radio Communication



14



Two-way Radios

- How they work
 - Frequencies
 - Channels
 - Range
 - ❖ Antenna, power level, atmospheric conditions



Two-way Radios (cont'd)

- Family Radio Service (FRS)
 - Advantages
 - ❖ Inexpensive
 - ❖ Widely used
 - ❖ No license required
 - ❖ Range up to 1 mile (varies with terrain)
 - ❖ 14 channels
 - ❖ Best used for intra-team communications



FEMA

CERT
Emergency Communications



16



Two-way Radios (cont'd)

- FRS

- Limitations

- ❖ Low Power
 - ❖ Line of Sight
 - ❖ Handheld only
 - ❖ Cannot alter radio (no antennas) = Limited range

Two-way Radios (cont'd)

- Amateur Radio (a.k.a. ham radio)
 - Advantages
 - ❖ Range in excess of 100 miles with repeaters
 - ❖ Does not use public infrastructure
 - ❖ Good availability
 - ❖ Moderately priced
 - ❖ Handheld, mobile, and base stations available



Two-way Radios (cont'd)

- Amateur Radio
 - Limitations
 - ❖ Requires license
 - ❖ No business use
 - ❖ Operators cannot be paid



Image from: http://www.icomamerica.com/images/products/large/91A_91AD_1.jpg



FEMA

CERT
Emergency Communications



19



Basic Radio Anatomy



Radio Use

- Not a Telephone
- Transmissions are not private
- No Personal information
- Transmit only when you have information for Control or Team Communications
- If they are not talking to you “Don’t Talk”



FEMA

CERT
Emergency Communications



21



Radio Use (cont'd)

- Push – Pause - Talk
 - Wait a fraction of a second after pushing the “talk” button
 - This avoids “clipping” off the first syllable



Radio Use (cont'd)

- Speak across the microphone
- Speak in a normal voice
- Repeat Critical Information
- Confirm information was received



FEMA

CERT
Emergency Communications



23



Pro-Words

- “This Is”
- “Over”
- “Go Ahead”
- “Out”
- “Affirmative”
- “Negative”

Tactical Call Signs

- Assigned by Incident Command
- Based on function and location
- Names are not needed
- Tactical call signs do not change for duration of assignment

Standard Message Format

Call: “Hey You” **THIS IS** “Me” **OVER**

Answer: **THIS IS** “Station Called” **GO AHEAD**

Response: “Transmit Message” **OVER**

Acknowledgement: “Message Repeated” **OUT**

Standard Message Example

Initial call: “RED HAM, **THIS IS RED ONE OVER**”

The answer: “**THIS IS** RED HAM, **OVER**”

The response “We have a critical bleeding victim at 319 Main Street. We need a medic as soon as possible. **OVER**”

The acknowledgement

“You have a critical bleeding victim at 319 Main Street and need a medic as soon as possible. **OVER**”

The response “RED ONE **OUT**”



Practical Exercises

- Live Fire Exercise
- Divide into Teams
- Use ICS Structure
- Use Radios to report status



FEMA

CERT
Emergency Communications



28



Module Summary

- Communications is a key component of emergency response
- CERTs assist emergency response agencies by communicating through ICS
- Communication plans define how to communicate during emergency response
- Each communication mode has advantages and limitations
- Achieve effective communication by using radio operation, tactical call signs, pro-words, phonetic alphabet, and basic protocols



FEMA

CERT
Emergency Communications



29

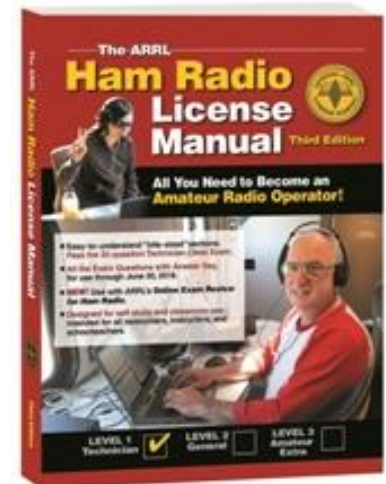


Amateur Radio Class

- Technician License Class
- 6 weeks 1 night a week
- \$14.00 test fee

www.w5eul.com
info@w5eul.com

Facebook
Amateur Radio Eules, W5EUL



FEMA

CERT
Emergency Communications



30



Emergency Communications



Thank you!